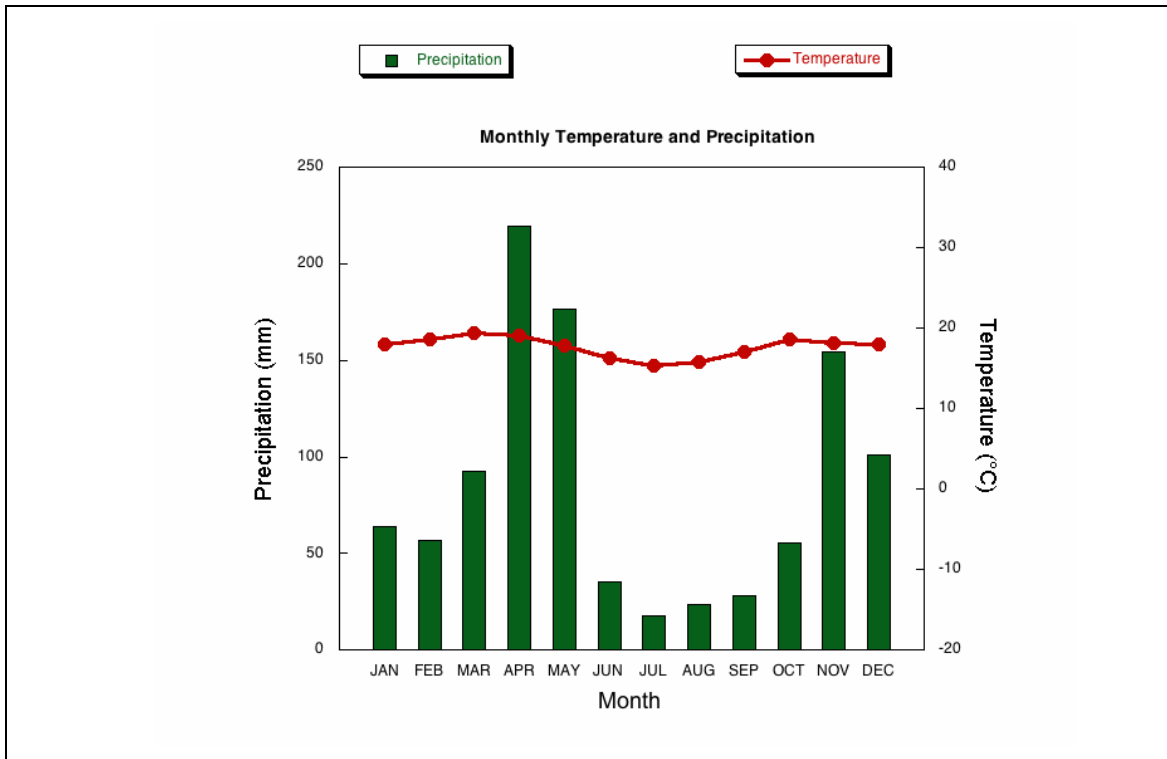


Social Studies Coalition of Delaware
Brief Constructed Response Template

Geography Standard 1 (mental map of climate regions)

Grade Cluster 6-8



<http://www.drought.unl.edu/whatis/climographsinternationalmetric.htm>

Brief Constructed Response Prompt:

A climograph is a graph that shows the average monthly temperatures and precipitation for a given place (city). Based on the climograph above in which hemisphere **must** the place (city) be located? Explain your answer.

Desired Response(s): 2 examples

- The place or city represented on the climograph must be located in the Southern Hemisphere since there is a dip in the line graph during the months of May through September.
- It must be the Southern Hemisphere since June, July, and August are the coldest months of the year.

* Responses should be based on the line graph (temperature).

Rubric

- 2** = This response gives a valid answer with an accurate and relevant response
- 1** = This response gives a valid answer with an inaccurate, irrelevant, or no response
- 0** = inaccurate or no answer.

**Social Studies Coalition of Delaware
Brief Constructed Response Template**