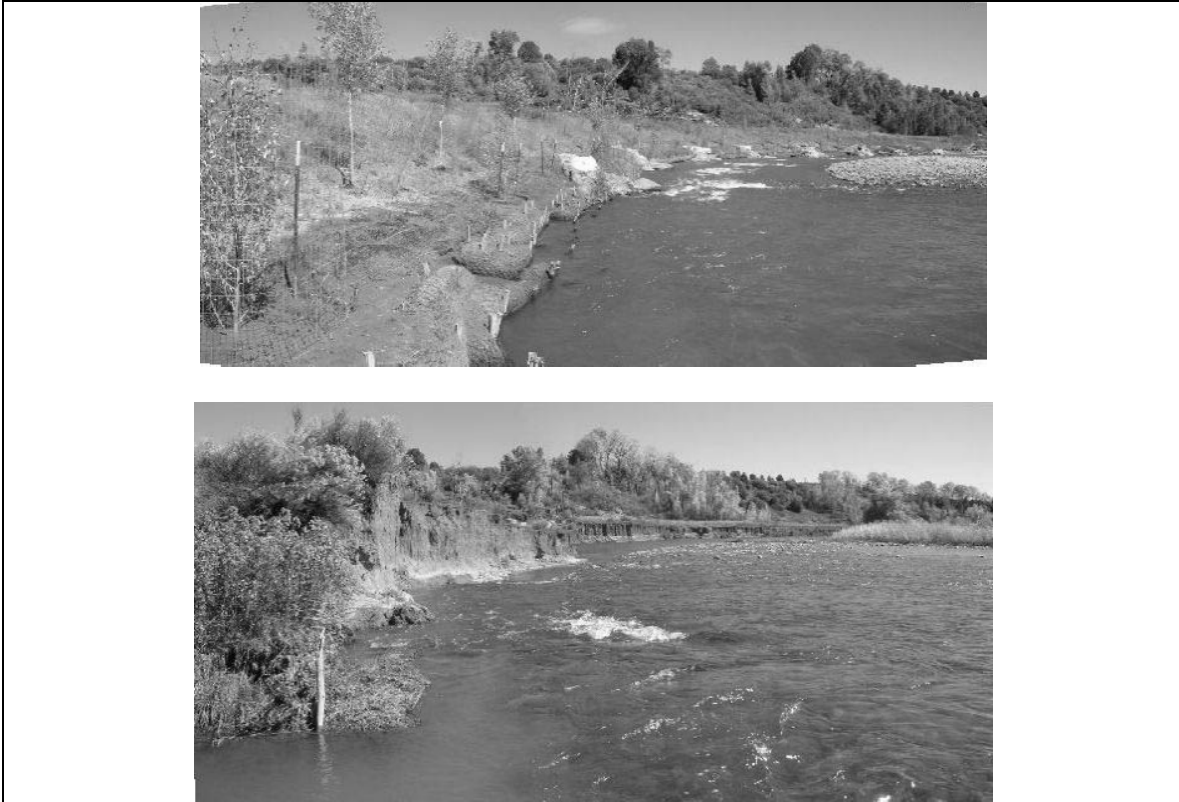


Benchmark: Students will understand the Earth’s physical environment as a set of interconnected systems (ecosystems) and the ways humans have perceived, reacted to, and changed environments at local to global scales.



Brief Constructed Response Prompt:

The above photos show changes that have occurred in a location over a five-year period.
How might this affect the activities of humans in the area?

Desired Response(s):

The photos appear to show a loss of shoreline, probably caused by erosion. People may find that property values fall, insurance is more difficult to obtain, or leisure activities are more difficult because the erosion has made the shoreline more steep.

Rubric

- 2 = This response gives a valid answer with accurate and relevant support.
- 1 = This response gives a valid answer with inaccurate, irrelevant, or no support.
- 0 = inaccurate or no response